



Teltinghof
3053 AP Rotterdam

€ 1.790 p.m. ex.





PERFECT RENT

Price	€ 1.790 p.m. ex.
Status	Rented
Acceptance	Directly
Apartment type	Mezzanine
Build type	Existing
Living surface	86m ²
Rooms	3
Bedrooms	2
Floors	1
Energy label	A
Balcony	Yes, 14m ²

Perfect Rent does not accept any liability regarding the veracity of the presented information, nor can any rights be derived from it.

Fantastic spacious 3-room apartment in Hilleegersberg-Schiebroek for rent. The apartment is rented in bare condition and is located on the first floor. In the surrounding area you will find the Peppelweg with several restaurants, bars, stores and supermarkets, in addition, metro station Meijersplein is just steps away. The city center can be reached in 15 minutes by public transport.

Layout:

- Living room with open kitchen of ca. 39m², with a sliding door that gives you access to a spacious balcony of ca 14m².
- Bedroom of ca. 18m².
- Second bedroom of ca 11m².
- Bathroom of ca 7m².
- Separate toilet.
- Indoor storage room with washing machine connection.
- External storage room of ca. 6m².

Various features:

- Inventory/Furnishings: the apartment is rented in bare condition.
- Kitchen facilities: cooktop, hood, combination microwave oven, refrigerator and dishwasher.
- Facilities bathroom: shower and washing basin.
- Heating system: central heating combi boiler.
- Glazing: double glazing.
- The accommodation has the energy label A.

Conditions:

- The monthly rent is € 1.790,-. This rent is exclusive of the service costs of € 60,- per month. Additional monthly costs consist of gas, water, electricity, internet, TV and municipal taxes. For a rough estimate of the costs you can check the website of Nibud (the national institute for budget information) under Uitgaven/Expenses. As agent we help you free of charge to arrange the utility contracts.
- Applying for rent subsidy is not possible.
- The deposit equals € 1.850,-.
- Habitation is possible for a maximum of 2 persons or a family with 1 child.
- The minimum rental period is 12 months.
- Smoking inside the accommodation is not permitted.
- Pets are not permitted.

Income requirement working people:

- Gross income of 3.5 times the rent. Savings may be added to gross monthly income by 1%.
- For employees: a remaining term of employment of at least 10 months or a letter of intent for extension.
- For self-employed persons: a confirmation of income by an external accountant for the full past financial year



and the current financial year (forecast).

- In other cases one may qualify with a guarantor, or a deposit which is increased by 1 to 2 months' rent.

Income requirement students:

- Renting by students is not possible.

Income requirement guarantors:

- Living or working in the Netherlands.
- Sufficient income and / or ability to be able to meet the rental obligations in addition to the own living expenditures.
- Furthermore, the same requirements that apply for employees or self-employed persons.
- A guarantor is only applicable if you are up to €200 under the income requirement.

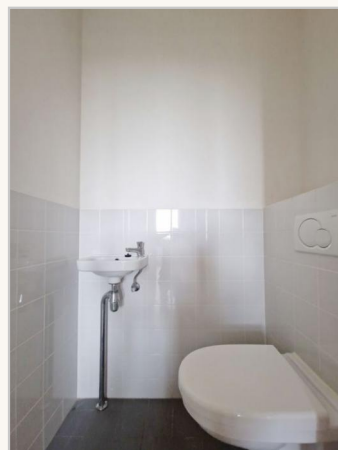
Interested?

We work with an automated system for viewing requests. To participate in the process you need to express your interest through the advertisement or use the button "contact the agent". We normally reply within five working days. Thank you for your effort!





PERFECT RENT



Perfect Rent
Paradijslaan 1
3034 SH Rotterdam

pararius

realstats^{nl}

funda



PERFECT RENT



Perfect Rent
Paradijslaan 1
3034 SH Rotterdam

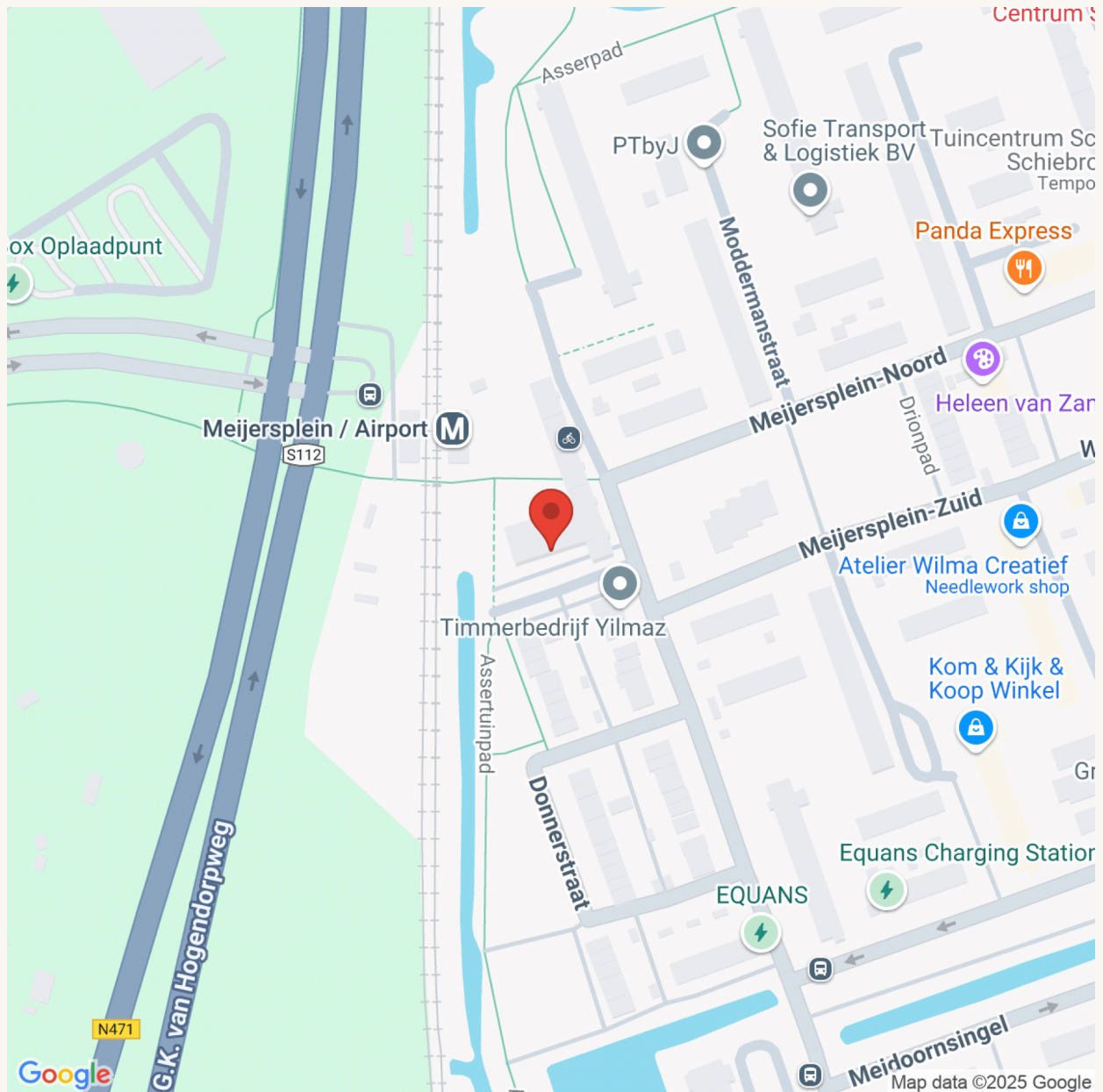
pararius

realstats^{nl}

funda



PERFECT RENT



Perfect Rent

Paradijslaan 1
3034 SH Rotterdam

pararius

realstats^{nl}

funda